



Toys

KEYSTONE MFG. CO. BOSTON, MASS. U.S.A.

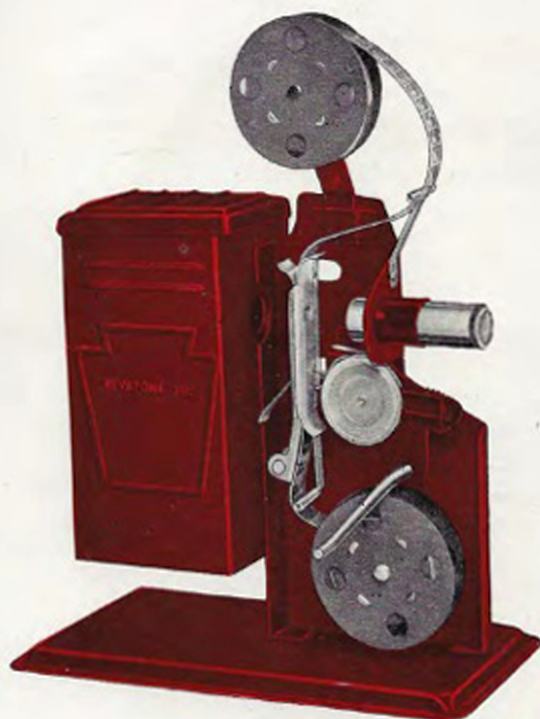


KEYSTONE (JUNIOR) MOVIE PROJECTORS

16 MILLIMETER

GENERAL SPECIFICATIONS OF ALL MODELS

All projectors are guaranteed to show clear and distinct pictures. All models will fit any 16 m.m. width film. All models (except E-29 and E-31) will operate on any 115-volt house current, A. C. or D. C. For use with ordinary house bulbs up to 75-watt depending on size of machine model. For use with ordinary electrical appliance house cord. Bulb and cord furnished only with E-65, E-67 and E-53. All projectors can use either regular roll film or loop film.



← MODEL E-24

Can use up to 50 feet of film. Hand crank. FINISH: Maroon enamel. SIZE OF MACHINE: $8\frac{1}{2}$ " x $4\frac{1}{2}$ " x 12" high. Shows picture about 18" x 22" at distance of 8 feet. 50-foot spool furnished. WEIGHT: 35 lbs. per dozen.

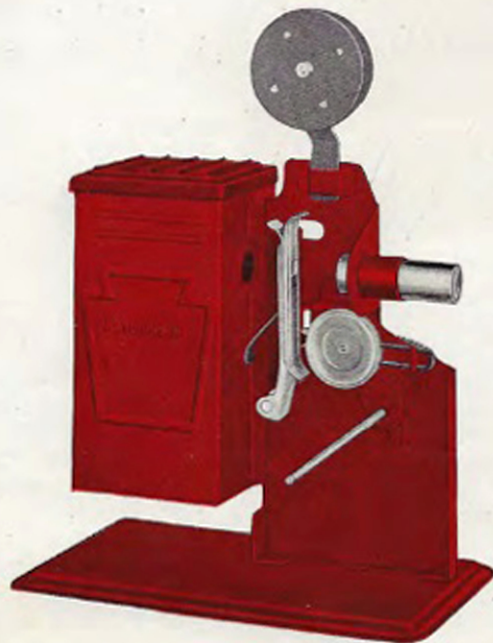
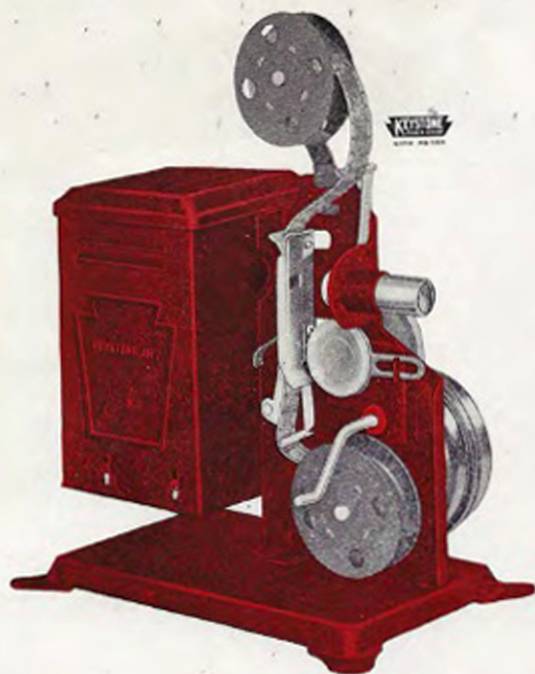
(See general specifications)

LOWEST PRICE ELECTRICAL MOTOR DRIVEN MACHINE EVER MADE

MODEL E-29 →

With A. C. Motor. Can use up to 50 feet of film. FINISH: Maroon crystal. SIZE OF MACHINE: $9\frac{1}{2}$ " x $7\frac{1}{4}$ " x 12" high. Shows picture about 18" x 22" at a distance of 8 feet. 50-foot spool furnished. WEIGHT: 56 lbs. per dozen.

(See general specifications)



Will operate with either short loop films or up to 25 foot lengths

AN EXCELLENT VALUE TO SELL FOR \$1.00

← MODEL E-21

FINISH: Red enamel. Hand crank. SIZE OF MACHINE: $8\frac{1}{2}$ " x $4\frac{1}{2}$ " x 12" high. Shows picture about 18" x 22" at a distance of 8 feet. 25-foot spool furnished. WEIGHT: 31 lbs. per dozen.

(See general specifications)

JUNIOR PROJECTORS



MICKEY MOUSE PROJECTOR

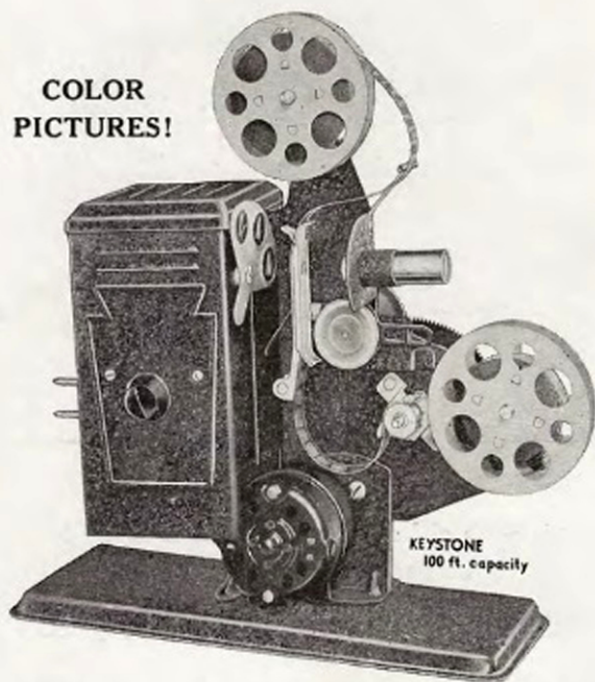
BY SPECIAL PERMISSION OF WALT DISNEY

MODEL E-18

(See general description page 3)

One of the outstanding successes of the year. Can use up to 50 feet of film — hand crank. FINISH: Green enamel with Mickey Mouse decoration. SIZE: $9\frac{1}{2}$ " x $6\frac{1}{4}$ " x 12" high when spool is in place. FURNISHED: One empty 50 foot spool. WEIGHT: 56 lbs. to dozen when packed for shipment. (See general specifications.)

COLOR
PICTURES!

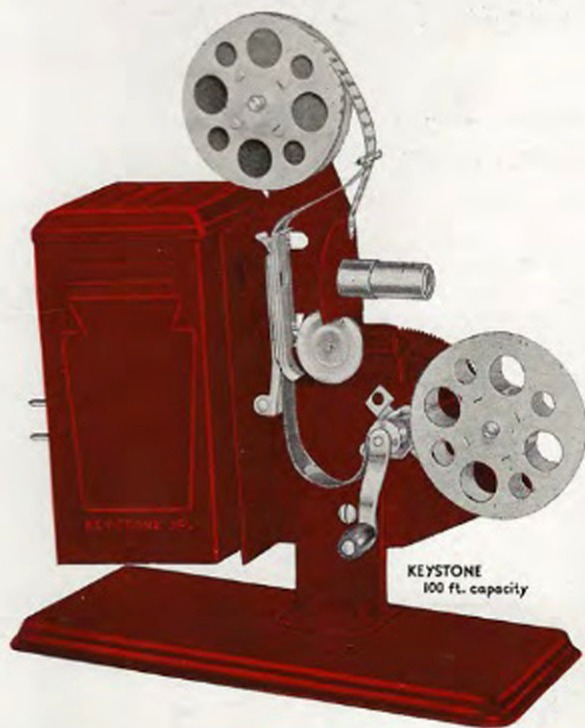


This model will show up any black and white film in color!

MODEL E-33

Universal Motor, with speed control for motor. Three color feature, red, green and blue, semaphore that operates between the light and the lens. FINISH: Black crystal. SIZE OF PICTURE: Up to 20" x 26" at a distance of 10 feet. Smaller pictures at a shorter distance. WEIGHT: When packed for shipment 93 lbs. to the dozen.

(See general specifications)



MODEL E-26 HAND CRANK

Can use up to 100 feet of film. Finished in maroon enamel. Has tilting device for angle projection. FURNISHED: One 100 foot empty spool. SIZE OF PICTURE: Up to 20" x 26" at a distance of 10 feet from the screen. Smaller pictures at shorter distances. WEIGHT: 76 lbs. to the dozen, when packed for shipment.

**MODEL E-31—Same as E-26 but with
A. C. Motor**

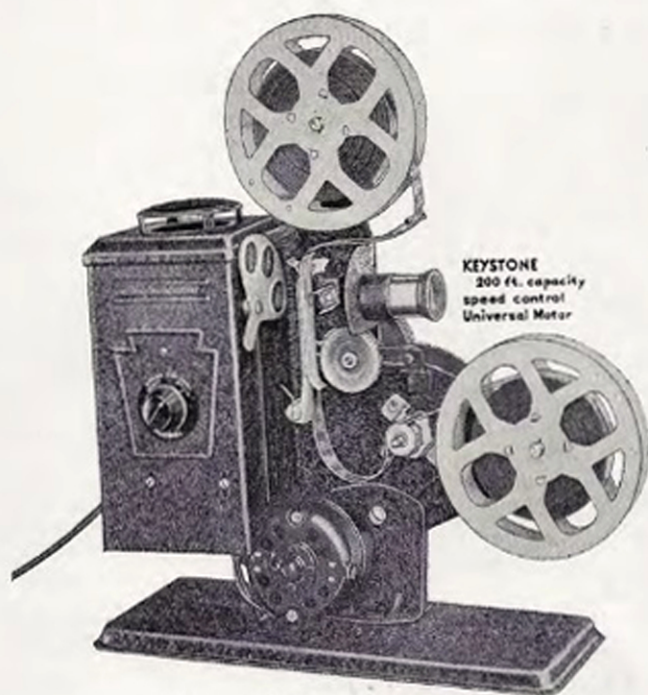
KEYSTONE (JUNIOR) MOVIE PROJECTORS



**200 FOOT CAPACITY
WITH THREE COLOR FEATURE**

MODEL E-65

The ONLY 200 foot machine ever placed on the market, at this low price. Equipped with shutter for clear sharp pictures. Machine includes special bulb, cord and plug. FINISH: Maroon enamel. SIZE OF PICTURE: Up to 20" x 26" at a distance of 10 feet. FURNISHED: With one empty 200 foot spool. Has three color feature, red, green and blue semaphore that operates between the light and the lens. WEIGHT: When packed for shipment, 80 lbs. to the dozen.



**200 FOOT CAPACITY
MOTOR REWINDS FILM TO UPPER SPOOL!**

MODEL E-67

Universal Motor, with speed control on motor. First machine ever built with electric rewind arrangement to rewind the film from the lower spool to the upper spool at this price. Has three color semaphore arrangement, red, green and blue to produce color pictures when black and white film is used. Special bulb, cord and plug. Operates 200 foot film, 200 foot empty spool furnished. WEIGHT: 108 lbs. to dozen when packed for shipment.

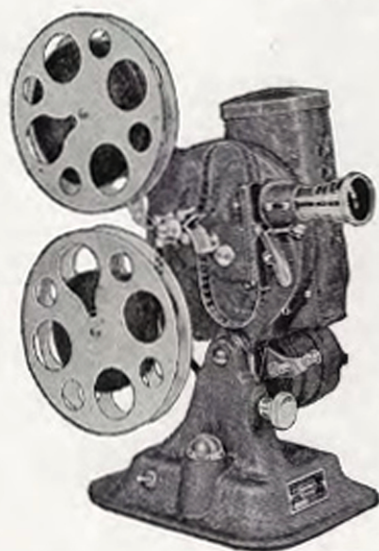


**MODEL E-53 PROJECTOR
WITH THREE COLOR FEATURE ATTACHMENT
400 FOOT CAPACITY**

Equipped with Universal motor drive and speed regulator which permits the adjustment of the speed desired. With professional type 3 blade shutter. ILLUMINATION: Furnished by super-lite projection lamp; illumination bulb furnished with machine. Highly polished reflector. LENS: 2 1/4" focus projection type. CONSTRUCTION: Steel lamp house; attractive baked enamel finish; steel base with rubber tips at bottom to prevent scratching of furniture. REEL CAPACITY: 400-foot. One 400-foot empty spool furnished with machine. REWIND GEAR: Equipped with high speed rewind gear. ADVANCE FEED: This model is equipped with advance feed sprocket which tends to give improved projection same as professional projectors. ANGLE PROJECTION: By a swivel between base and body any angle can be obtained. SIZE OF PICTURE: Up to 20" x 26" at a distance of about 10 feet; smaller pictures at shorter distances. Underwriters approved. WEIGHT: 9 lbs. each.

KEYSTONE MOVIE PROJECTORS

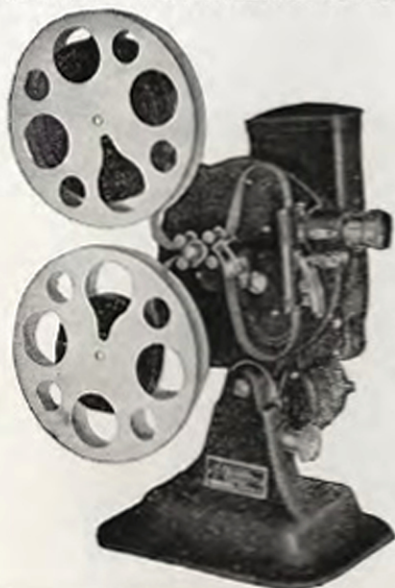
FOR SCHOOLS—CHURCHES—HOMES—COMMERCIAL USES



MODEL A-78

Price, \$79.50

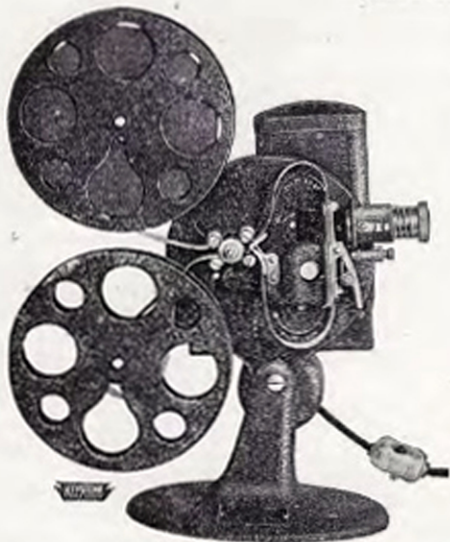
500-Watt Lamp
Auditorium Lens
Forward and Reverse Drive
Rapid Motor Rewind
New Cooling System . . . Cools While Projecting Stills
Pilot Light
Picture Size — up to 14 feet wide at distance of 75 feet
Quiet Operation
Safety Shutter for Stills
Knob Swivel Device for Tilting
Die Cast Construction



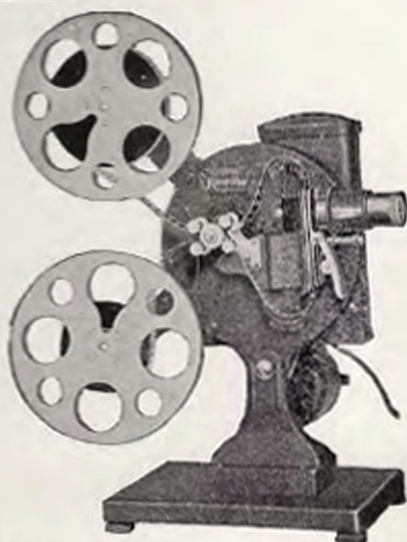
MODEL A-74

Price, \$55.00

300-Watt Pre-focus
Lamp
2" Focal Length Lens
Forced Ventilation
Angle Projection
Size of Picture: Up to
40x52" at distance of
24 feet
Rewind Mechanism
Oiling System
Still Pictures

 **MODEL B-63****Price, \$39.50**

200-Watt Pre-focus Lamp
Ventilating Fan
Automatic Framer
Angle Projection
Size of Picture: Up to 40x52"
at distance of 24 feet
Rewinding Mechanism
Guide for Film Threading
Still Pictures



MODEL D-62

Price, \$29.50

100-Watt Pre-focus Lamp
2 1/4" Focus Projection Type Lens
Rewind Gear
Angle Projection
Size of Picture: Up to 23x33"
at a distance of 18 feet
Universal Motor Drive
Still Pictures

KEYSTONE MOVIE CAMERAS

MODEL "A" CAMERA

16-MILLIMETER



Price, \$35.00
With f. 3.5 Lens

Convenient Size—2 1/2" thick x 9" long x 4" wide, with 1 1/2" lens extension. Symmetrical shape, making Camera easy to carry and permitting firm grip while operating. **High Power Lens**—f3.5 LENS—universal focus with adjustable mechanical iris. This lens is fast and accurate, giving a sharp, true to life picture. The f1.5 LENS is for ultra-rapid speed and is a standard Wollensak Cine-Velostigmat—1" focus. **Monocular Viewfinder**—Built right into Camera. Tripod Connection provided for, but tripod is not necessary to obtain steady pictures. **Spring Motor**—Designed to withstand severe use. **Easy Winding**—Winds very easily. Similar to winding a clock. Key is permanently attached to the Camera and folds down out of the way when not in use. About 20 feet of film can be taken with each winding. **Capacity**—100-foot or 50-foot 16-millimeter film. **Daylight Loading**—Camera may be loaded in broad daylight. **Film Register**—Automatically indicates the amount of film left after taking each scene. **Precision Movement**—Finger type movement feeds film steadily and with hairline accuracy. **Distinctive Finish**—Attractive black wrinkle enamel with highly polished chrome trimmings.











Price, \$72.00
With f. 1.5 Lens

long x 4" wide,
ammetrical shape,
and permitting
h Power Lens—
with adjustable
ist and accurate
ature. The f.1.5
and is a standard
focus. Monocu-
Camera. Tripod
tripod is not
ictures. Spring
ever use. Easy
Similar to wind-
attached to the
the way when not
can be taken with
foot or 50-foot
loading—Camera
t. Film Register
amount of film
Precision Move-
des film steadily
tinctive Finish—
mel with highly



MODEL A-7 CAMERA

Price, \$44.50 Price, \$84.50

With <i>f</i> . 3.5 Lens	With <i>f</i> . 1.5 Lens
	
	
	
	
	

Seven Speeds

High Power—f. 3.5 Lens
Monocular Viewfinder
Spring Motor
Film Register
Spring Release
Seven Speeds
Built-In Exposure Scale
Capacity—50 or 100 feet
Finish—Beautiful Black
Crackle



MICKEY MOUSE

SPECIAL PERMISSION WALT DISNEY ENTERPRISES



A complete and definite episode in each subject. We are the exclusive distributors of Mickey Mouse and Silly Symphony 16 M.M. Toy Films, by special arrangement with Walt Disney.

100-Foot Lengths, \$3.50 each

- 801-A—Mickey's Melodies and Mickey Loses Out
- 802-A—Dancing with Minnie and Steamboat Mickey
- 803-A—Mickey the Farmer and Mickey Tricks
- 804-A—Mickey Goes Wild and the Cat's Away
- 805-A—Mickey Enlists and the Peanut Peddler
- 806-A—Mickey's Last Stand and Carnival Days
- 807-A—Mickey Goes to War and Mickey Serenades Minnie
- 808-A—Mickey's Nightmare and The Big Parade
- 809-A—Mickey's Skeleton Dance and Horace Horse Collar
- 810-A—The Haunted House and The Jazz Fool
- 817-A—Mickey's Misfortune
- 818-A—Mickey the Life Guard
- 819-A—Mickey the Fireman
- 820-A—Mickey's Busy Day
- 821-A—Mickey Out West
- 822-A—Mickey's Holiday
- 823-A—Mickey Steps Out

100-Foot Lengths (Continued)

- 824-A—Mickey's Bad Dream
- 825-A—Mickey's Tough Luck
- 848-A—Mickey Wins Out
- 849-A—Mickey the Taxi Driver
- 850-A—Mickey's Troubles

50-Foot Lengths, \$1.75 each

- 826-Z—Mickey in Vaudeville
- 827-Z—Mickey's Buggy Ride
- 828-Z—Mickey's Blow Out
- 829-Z—Mickey Gets Caught
- 837-Z—Mickey's Swiss Tune
- 838-Z—Mickey the Hero
- 839-Z—Mickey's Jungle Escape
- 840-Z—Robinson Crusoe Mickey
- 841-Z—Mickey's Spooks

25-Foot Lengths, \$.90 each

- 851-Y—Mickey the Janitor
- 852-Y—Mickey's Big Bust
- 853-Y—Mickey's Terrible Tune
- 854-Y—Mickey the Pilot
- 855-Y—Mickey's Hand Organ
- 856-Y—Kitchen Mechanic Mickey
- 857-Y—Tooting the Tuba

25-Foot Lengths (Continued)

- 858-Y—Mickey and Minnie
- 859-Y—Mickey's Clever Stunt
- 860-Y—Mickey's Big Cheese
- 861-Y—Mickey's Hot Dogs
- 870-Y—Mickey's Wild Animals

10-Foot Lengths, \$.35 each

- 876-X—Mickey Fails
- 877-X—Mickey's Cat
- 878-X—Hot Feet
- 879-X—Mickey's Lunch
- 880-X—Mickey's Bite
- 881-X—Mickey's Rival
- 882-X—Fancy Steps
- 883-X—Sour Notes
- 884-X—Captain Mickey
- 885-X—Mickey Whoopee

200-Foot Lengths, \$10.00 each

- 351-B—The Plow Boy
- 352-B—The Haunted House
- 353-B—The Fire Fighters
- 354-B—Traffic Troubles
- 355-B—Pioneer Days
- 356-B—The Barnyard Dance

WALT DISNEY'S SILLY SYMPHONY CARTOONS

100-Foot Lengths, \$3.50 each

- 811-A—Grasshopper Dance and Cannibals
- 812-A—Croak Little Frog and Hot Soup
- 813-A—The Dancing Toys and The Little Elfs
- 814-A—Fairyland and Midnight
- 815-A—Zu-Lu Jazz and Hoot Owl, Hoot
- 816-A—Toy Shop Revue and Spooky Spooks

50-Foot Lengths, \$1.75 each

- 830-Z—Jack and Jill
- 831-Z—Little Bo Peep
- 832-Z—Old King Cole
- 833-Z—Cat and the Fiddle
- 834-Z—Little Jack Horner

50-Foot Lengths (Continued)

- 835-Z—Little Miss Muffet
- 842-Z—The Early Bird
- 843-Z—April Showers
- 844-Z—The Brownies
- 845-Z—Santa Claus Land
- 846-Z—Fire Works
- 847-Z—The Skeleton Skit

25-Foot Lengths, \$.90 each

- 872-Y—Cannibal Dance
- 873-Y—Summer Days
- 874-Y—The Doll Parade
- 875-Y—Teddy Bear Dance
- 876-Y—Little Dwarfs
- 877-Y—Jungle Animals

10-Foot Lengths, \$.35 each

- 887-X—The Lion's Bite
- 888-X—Black Bottom Dance
- 889-X—Toyland
- 890-X—Dancing Dwarfs
- 891-X—The Lion
- 892-X—Animal Land

200-Foot Lengths, \$10.00 each

- 381-B—Springtime
- 382-B—The Skeleton Dance
- 383-B—Midnight in a Toy Shop
- 384-B—The Merry Dwarfs
- 385-B—Cannibal Capers
- 386-B—Night



KEYSTONE HOME MOVIES

16 M.M. FILMS FOR PROJECTORS



30-INCH LOOP FILM

FOR CONTINUOUS PROJECTION

Can be used on All Models

B-1001—Tom Mix—Dangerous Trails

B-1002—Tom Mix—Riding to Victory

B-1003—Tom Mix—Blazing Guns

B-1006—Wm. S. Hart—Shooting Bill

B-1007—Wm. S. Hart—The Sheriff

B-1008—Wm. S. Hart—The Holdup

B-1011—McDougall Alley Gang—The Pie-Eyed Kid

B-1012—McDougall Alley Gang—The Mud Slingers

B-1013—McDougall Alley Gang—A Dirty Trick

B-1016—Us Fellers—Shooting the Elephant

B-1017—Us Fellers—Chased by a Lion

B-1018—Us Fellers—Swallowed by the Elephant

B-1021—Mutt and Jeff—At the Bullfight

B-1022—Mutt and Jeff—The Mad Marathon

B-1023—Mutt and Jeff—Spring Feet

B-1027—Charlie Chaplin—The Crazy Janitor

B-1028—Charlie Chaplin—The Window Washers

B-1029—Charlie Chaplin—The Baggage Smasher

B-1032—Jerry on the Job—Flying Bullets

B-1033—Jerry on the Job—Mopping Up

B-1034—Jerry on the Job—Beamed by a Horseshoe

B-1037—Happy Hooligan—Killed by a Kangaroo

B-1038—Happy Hooligan—The Knockout

B-1039—Happy Hooligan—The Wood Chopper

B-1042—Krazy Kat—The Kat and the Ostrich

B-1043—Krazy Kat—Stealing the Cheese

B-1044—Krazy Kat—The Ghost

COMPLETE FILM LIST SENT ON
REQUEST

10-FOOT LENGTHS



Charlie Chaplin — Charlie's Dream

CHARLIE CHAPLIN—10 Ft.

16366—Charlie Chaplin—The Rescue

16368—Charlie Chaplin—Charlie's Dream

16369—Charlie Chaplin—Saving Charlie

16372—Charlie Chaplin—Having Fun

CARTOON COMEDY—10 Ft.

21101—Krazy Kat—Beamed with a Brick

21102—Bobby Bumps—Chased by the Sultan

21103—Jerry on the Job—The Cat Drops Out



Wm. S. Hart

WESTERN—10 Ft.

16373—Wm. S. Hart—Himself

16376—Wm. S. Hart—The Outlaw Chief

16416—Wm. S. Hart—Two Gun Bill

16417—Wm. S. Hart—A Capture and Escape

16418—Wm. S. Hart—Gun Practise—Closeup

16400—Tom Mix—Attacking the Stage Coach

16401—Tom Mix—Behind the Scenes

MISCELLANEOUS—10 Ft.

16402—Lindbergh—And his Plane

1576—Novelty—Snow-Plowing in the Alps

1575—Sports—Winning the Kentucky Derby



KEYSTONE HOME MOVIES

16 M.M. FILMS FOR PROJECTORS



25-FOOT LENGTHS

ON SPOOL



CHARLIE CHAPLIN—25 Ft.

- 16389—Charlie Chaplin—Free Samples at the Drug Store
- 16392—Charlie Chaplin—Making Friends
- 3211—Charlie Chaplin—Hoola-Hoola Dance
- 3212—Charlie Chaplin—The Janitor
- 3213—Charlie Chaplin—Back Stage
- 3214—Charlie Chaplin—The Scrapper

WESTERN—25 Ft.

- 16394—Wm. S. Hart—Rescuing the Girl
- 16406—Tom Mix—A Thrilling Movement
- 1629—Tom Mix—Fire Cracker Kid
- 1649—Tom Mix—The Escape
- 14204—Tom Mix—With his Rifle
- 33201—Tom Mix—The Fight

ACTION PICTURES—25 Ft.

- 1551—The Third Alarm
- 1552—Revolution in Santo Domingo
- 1553—Attacking the Balloon

GANG COMEDY—25 Ft.

- 3611—McDougall Alley Gang—The Fighting Fool

NOVELTY—25 Ft.

- 1557—The Performing Cats
- 1558—Circus Elephants Perform
- 1559—Monkey-land
- 1561—Miss America Beauty Pageant



Jerry On The Job

CARTOON COMEDY—25 Ft.

- 3111—Felix the Cat—Chased by an Oyster
- 3112—Krazy Kat—Kats is Kats
- 31101—Krazy Kat—Held for Ransom
- 31102—Krazy Kat—Going Krazy
- 31103—Happy Hooligan—Getting the Goods
- 31104—Bobby Bumps—Up in Smoke
- 31105—Bobby Bumps—In a Harem
- 31106—Jerry on the Job—Hard Times
- 31107—Jerry on the Job—Dry Fishing
- 1550—Billy the Goat—"Whoopie"
- 3113—Bobby Bumps—On the Road
- 3114—Bobby Bumps—Last Smoke
- 3115—Jerry on the Job—Beach Nuts
- 3116—Jerry on the Job—Monkey Business
- 3117—Jerry on the Job—Trained Horses
- 3118—Judge Rummy—On with the Dance
- 3119—Out of the Inkwell—Kangaroo
- 3120—Farmer Alfalfa—Tentless Circus
- 3121—Us Fellers—Dud Makes a Home Run
- 3122—Goodrich Dirt—The Cop
- 3123—Hot Dog—Smatter Pete
- 3124—Hot Dog—Puppy Express

SPORTS—25 Ft.

- 1565—Winter Sports on Mt. Ranier
- 1566—Dog Sled Race
- 1567—The Enterprise—American Cup Defender

MISCELLANEOUS—25 Ft.

- 1633—Lindbergh—Hats Off
- 1646—Admiral Byrd—Return from South Pole
- 1563—Scenic—Venice from the Sky

50-FOOT LENGTHS

ON SPOOL

CHARLIE CHAPLIN—50 Ft.

- 1701—Charlie Chaplin—Skip the Puddles
- 1703—Charlie Chaplin—Ladies' Man
- 4211—Charlie Chaplin—Capturing the Robber
- 4212—Charlie Chaplin—The Mighty Hunter
- 4213—Charlie Chaplin—The Cave Man
- 4214—Charlie Chaplin—Assistance Wanted
- 4215—Charlie Chaplin—The Baggage Man

WESTERN—50 Ft.

- 43101—Wm. S. Hart—The New Boss
- 4311—Tom Mix—The Hasty Exit
- 4312—Tom Mix—Ransomed
- 4313—Tom Mix—Shootin' Up the Town
- 1523—Wild West—The Bronco Busters



Krazy Kat — The Great Cheese Robbery

CARTOON COMEDY—50 Ft.

- 1716—Jerry on the Job—The Candy Kid
- 1717—Jerry on the Job—The Tramps Escape
- 1718—Jerry on the Job—Kidnapped
- 4111—Felix the Cat—The Pearl Diver
- 4112—Krazy Kat—Best Mouse Loses
- 4113—Krazy Kat—Wireless Wire Walker
- 1721—Krazy Kat—The Great Cheese Robbery
- 1722—Krazy Kat—Rescued by a Guilty Conscience
- 1515—The Foxy Farmer
- 4114—Mutt and Jeff—The Champion
- 1719—Bobby Bumps—Goes Fishing
- 1720—Bobby Bumps—In the Circus
- 1723—Bobby Bumps—Daylight Camper
- 1724—Jerry on the Job—Bum Victory
- 1725—Jerry on the Job—Train Robber
- 1726—Farmer Alfalfa—Blind Pig
- 1727—Farmer Alfalfa—Sees New York
- 1728—Us Fellers—Old Swimming Hole
- 1729—Out of the Inkwell—Chinaman
- 1730—Out of the Inkwell—Automobile Ride
- 1731—Farmer Alfalfa—Invents New Kite

GANG COMEDY—50 Ft.

- 4611—McDougall Alley Gang—Yankee Doodle



KEYSTONE HOME MOVIES

16 M.M. FILMS FOR PROJECTORS



100-FOOT LENGTHS ON SPOOL



Charlie Chaplin

CHARLIE CHAPLIN—100 Ft.

- 1751—Charlie Chaplin—The Stolen Umbrella
- 52101—Charlie Chaplin—The Dentist
- 52102—Charlie Chaplin—Filling a Prescription
- 52103—Charlie Chaplin—Laughing Gas
- 5211—Charlie Chaplin—I am a King
- 5212—Charlie Chaplin—The Window Washer
- 5213—Charlie Chaplin—The Property Man

WESTERN—100 Ft.

- 5317—Ken Maynard—Saving the Squatter
- 53105—William S. Hart—The Daring Rescue
- 5311—Tom Mix—Using His Brains
- 5313—Tom Mix—Who's the Boss
- 5316—Tom Mix—Fighting Against Odds



Devil Dancers of Ceylon

TRAVELOGUES—100 Ft.

- 1801—Niagara Falls
- 1802—Cairo, Egypt
- 1803—Picturesque Japan
- 1804—Spain
- 1805—Turkey (Asia) and Constantinople
- 1806—Through Dauphine (France)
- 1807—Syria
- 1808—Ceylon—Devil Dancers and Buddhas
- 1809—Milan (Italy)
- 1810—Ruins of Egypt
- 1811—Hong-Kong and Canton, China
- 1812—City of Algier
- 1813—Venice (Italy)



Bobby Bumps — Surf Rider

CARTOON COMEDY—100 Ft.

- 1760—Out of the Inkwell—Tantalizing Fly
- 1766—Goodrich Dirt—Coin Collector
- 1767—Goodrich Dirt—Training Camp
- 1770—Hot Dog Series—Pete's Party
- 1771—Hot Dog Series—Jungle Belles
- 1772—Hot Dog Series—Dog Gone It
- 1773—Us Fellers—Dud, Circus Performer
- 1774—Us Fellers—Chip off the Old Block
- 1775—Us Fellers—Lion Tamer
- 1777—Farmer Alfalfa—Revenge
- 1778—Judge Rummy—Joy Rider
- 1779—Judge Rummy—Turn to the Right Leg
- 1780—Happy Hooligan—Tale of Kangaroo
- 1781—Happy Hooligan—Spider and the Fly
- 1782—Jerry on the Job—Without Coal
- 1783—Jerry on the Job—Tale of a Wag
- 1784—Jerry on the Job—Bomb Idea
- 1785—Jerry on the Job—Cheating the Piper
- 1786—Jerry on the Job—Wrong Track
- 1787—Jerry on the Job—Mad Locomotive
- 1788—Jerry on the Job—Quick Change
- 1789—Bobby Bumps—Surf Rider
- 1790—Bobby Bumps—On the Doughnut Trail
- 1791—Krazy Kat—Family Affair
- 1792—Krazy Kat—Awful Spook
- 1793—Krazy Kat—Chinese Honeymoon
- 1794—Krazy Kat—Hindges on the Bar Room Floor
- 5111—Felix the Cat—The Hollywood Beauty
- 5112—Mutt and Jeff—The Bull Fighter

GANG COMEDIES—100 Ft.

- 1761—McDougall Alley—Big Pie Raid
- 1762—McDougall Alley—Oh Boy
- 1764—McDougall Alley—Present Arms

MISCELLANEOUS—100 Ft.

- 16178—Nature Study—The Birth of a Bean
- 16179—Nature Study—Marvels of a Trained Fly
- 16175—U. S. Navy—Air Fleet in Action
- 16176—U. S. Navy—Battleships Attack Enemy

200-FOOT LENGTHS

CARTOON COMEDY—200 Ft.

- 2001—Bobby Bumps—On Fishing Trip
- 2002—Bobby Bumps—Circus Days
- 2003—Bobby Bumps—His Goatmobile
- 2004—Bobby Bumps—Detective Story
- 2005—Police Dogs—Turns Nurse
- 2006—Police Dogs—On the Wire
- 2007—Judge Rummy—A Fitting Gift
- 2008—Out of the Inkwell—Men of China
- 2009—Out of the Inkwell—The Flivver Trip
- 2010—Farmer Alfalfa—In New York
- 2011—Farmer Alfalfa—The Kite Maker
- 2012—Farmer Alfalfa—Open Air Circus
- 2013—Farmer Alfalfa—McDougall Alley in the Trenches



CHARLIE CHAPLIN—200 Ft.

- 2014—Charlie Chaplin—In Tough Luck
- 2015—Charlie Chaplin—In the Dumbell

ACCESSORIES

NO. 603—KEYSTONE SCREEN



NO. 603 SCREEN

Made of Masonite surfaced with special aluminum preparation. In wood frame. Size: 22" x 16". Has swivel pieces at the base so that the screen will stand. Each packed in corrugated carton, weight when packed for shipment 3½ lbs.

NO. 610—KEYSTONE BEADED SCREEN



Showing Screen erected and ready to use.

This excellent screen is ingeniously made into a one-piece folding unit that collapses into a small, compact, easily carried package. The projection surface of this screen is composed of minute glass crystals, embedded in a pure white composition field.



Showing screen closed and ready for carrying or storing

The wooden carrying case in which the screen is built is covered with leatherette with nickel trimmings and leather carrying handle. One pull lifts the screen up into position; to close, pull up the ring. Strongly constructed and bound to give splendid service.

The screen surface measures 30" x 40", and when closed for carrying purposes weighs 9¼ lbs.

KEYSTONE FILM CEMENT



Keystone Film Cement was especially developed for the splicing of safety film. It contains the highest quality chemicals and is furnished in ½-ounce or 1-ounce bottles.

½-ounce Bottle	\$.20 List
1-ounce Bottle35 List



NO. 710—FILM SPLICER

For mending film breaks, equipped with film cement and simple instructions. Packed small cardboard box.

NO. 650—ELECTRIC CORD SETS

For Models E-21, E-18, E-24, E-29, E-26, E-31 and E-33.

BULBS (For Toy Projectors)

60-watt Frosted Lamp	\$.15
(For Models E-21, E-33 inclusive)	
No. 960 Superlite Lamp	\$.50
(For Models E-26, E-31, E-33, E-65, E-67 and E-53)	



EXTRA SPOOLS

400-foot steel spool	\$.50
400-foot aluminum spool75
200-foot spool35
100-foot spool20
50-foot spool15



400' Reel

COMPLETE ACCESSORIES CATALOGUE FURNISHED ON REQUEST

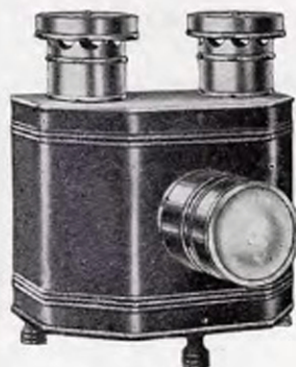


KEYSTONE RADIOPTICANS

FOR POSTCARDS, PHOTOGRAPHS, ETC.



No. 401 RADIOPTICAN



Price \$3.50

Equipped with 3-inch double convex ground and polished lens, two ventilators to keep the housing cool, electric cord plug, sockets for two bulbs and with reflectors inside body. It is strikingly finished in baked enamel.

SIZE. Length 9½ in., width 9 in., height 11 in.

Sample Animal and Scenic Cards with each machine.



Color Post Cards
Snap Shots Abroad
Bible Pictures
Scenic Views



Vacation Snap Shots
Old Time Pictures
Family Groups
Babies



Birds
Flowers
Famous People
Scenes
and Enlargements

KEYSTONE
RADIOPTICAN

MADE IN BOSTON
Entertaining-Educational
Any Picture
Any Color
Any Time or Anywhere
There is an Electric Socket



Daily Newspaper Comics
Sunday Color Comics
Valentines
Cartoons
Songs



Machines
Road Maps
Commercial Work



Shadows
Guessing Games
Illustrated Songs
Story Book Pictures



Use it
in Connection
With Your Camera

No. 411 RADIOPTICAN

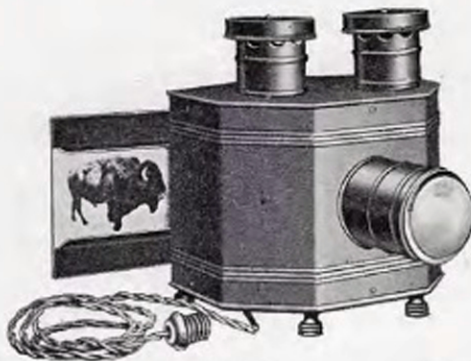


Price \$5.00

Equipped with 3½-inch double convex ground and polished lens, two ventilators to keep the housing cool, two polished reflectors, electric cord plug, sockets for two bulbs inside body. It is strikingly finished in baked green crystal enamel.

SIZE. Length 9¾ in., width 11 in., height 12 in.

Sample Animal and Scenic Cards with each machine.



No. 421 RADIOPTICAN

Price \$8.50

Because of its superior lenses, illuminants and reflectors, this model yields a sharper and brighter picture.

LENS SYSTEM. Double Plano-Convex Lens System.

ILLUMINATION. Fitted with large parabolic reflectors and 6 ft. of cord for attaching to any electric light fixture.

PICTURE HOLDERS. Two holders for standard post cards, etc., are mounted on detachable sliding backs with adjustable holders for pictures up to 6½ inches x 5½ inches (patented) eliminating delay between subjects and preventing light being let into room when loading.

COOLING ARRANGEMENTS. Thoroughly ventilated and protected with air spaces.

FINISH. Highly crystalized baked black finish.

SIZE. Length 11 in., width 11¼ in., height 12¼ in.

Sample Animal and Scenic Cards with each machine.



No. 431 RADIOPTICAN

Price \$12.50

The illumination in this model is double that of No. 421 and it has the distinct advantage of a sliding carrier for detachable backs, patented adjustable picture holders and minor refinements such as light-tight ventilators.

LENS SYSTEM. Double Plano-Convex Lens System covering prints and photographs up to 6½ x 5½ inches.

ILLUMINATION. Extra large parabolic reflectors and 6 ft. of cord for attaching to any electric light fixture.

PICTURE HOLDERS. Two patented, adjustable holders mounted on metal plates which drop into a double sliding carrier, provide a picture changing system identical with the established standard of all high grade stereopticons. The adjustable holders receive pictures up to 6½ x 5½ inches, either vertical or horizontal.

COOLING ARRANGEMENTS. Thoroughly ventilated and provided with air spaces.

FINISH. Highly crystalized baked black finish.

Sample Animal and Scenic Cards with each machine.

"LEADERSHIP"



AMERICA'S OLDEST AND LARGEST MANUFACTURERS
of Juvenile Movie Projectors in volume and price range.



AMERICA'S LARGEST MANUFACTURERS
of Boats in volume, price range and assortment.



ORIGINAL MANUFACTURERS
of the "Handle Bar and Seat" idea in Steel Toys.



The Widest Variety of Toys Manufactured under one roof.

QUALITY



KEYSTONE MANUFACTURING COMPANY

288 A STREET - - BOSTON, MASSACHUSETTS

NEW YORK SHOWROOM - 200 FIFTH AVENUE



KEYSTONE MANUFACTURING COMPANY

288 A STREET

BOSTON, MASS.

NEW YORK SHOWROOM

200 FIFTH AVENUE